

Contributing to Gambalunga

Articles and Letters

All contributions are welcome (items may be edited for length or content). Email is best (send to editor@motoguzziclub.co.uk). Microsoft Word, plain text or RTF files are all welcome. If you are not particularly into computers, any old word processor can be used but I'd rather not receive Microsoft Works files. If you do use Microsoft Works, please choose 'Save As. . .' and choose 'RTF' as a file format. Alternatively, simply type into your email.

Please don't bother with any fancy formatting of fonts and layout as all that will be ruthlessly stripped out before the text can be used! If you have digital pictures, please send them to me as they are – PLEASE don't embed them in a Word document! See the section that follows on digital pictures.

Please send any handwritten or typed contributions directly to Mike Howers at 23, Chalgrove Road, Sutton SM2 5JT. If you have photographic prints, send them to the editor with an SAE if you'd like them returned.

Digital Pictures

It's easy to take digital pictures with anything from a mobile phone to an expensive DSLR camera but not all are suitable for reproduction in a magazine. Camera manufacturers use the term 'Megapixel' to indicate the quality you are likely to get from a camera. A pixel is one small coloured dot in the image (similar to the dots used when printing) and simply put, the more pixels, the better the picture.

A mobile phone might take a picture with dimensions of 640 (w) x 480 (h) pixels. This will not reproduce at all well and is only good for a tiny printed image. A decent compact camera might produce an image around 2800 (w) x 2100 (h). Much better. In addition to this, consider the quality of the lens on the camera. A really good lens taking a moderate size picture will give a better result than a poor lens taking a picture with more pixels. Practically speaking, anything less than 1600x1200 is unlikely to be usable for print and something like 3,200 x 2,400 is best for a full A4 page

To complicate things a little more, most digital pictures are stored after the image is compressed using JPEG compression. If you want to know what JPEG stands for, send me an email! JPEG compression reduces the file size by discarding information. The more info that is discarded, the lower the picture quality. The upside is that you can get more pictures stored in your camera. Your camera might have settings for image size such as Large, Medium or Small (or sizes in pixels). There might also be quality settings such as Low, Medium and High – these refer to the compression. The best option for print is a Large image with High quality.

You might be tempted to reduce the file size of an image before sending it along. Please don't do this – the next section describes an easy, free way to send many high-quality pictures to me without running into problems with your email provider.

Finally, please don't leave the date/time stamp feature turned on in your camera and don't use Photoshop to embed a caption!

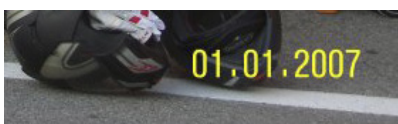


640x480, low quality



2,800x2,100, high quality

Rolf says "Can you see what it is yet?"



Not like this!

Sending digital images

If you need to send lots of large digital images, you might have a problem doing this with email attachments. Several online providers offer a free service to send files, getting round this problem. You upload the files to a server (it's easy, really) and a link is sent to the recipient (in this case, me). A service that lets you send several files at once is WeTransfer (www.wetransfer.com/). Here are the steps:

- 1) Make sure you know where your image files are on your computer.
- 2) Launch a web browser such as Firefox or Safari and go to www.wetransfer.com/. You'll see a large page with an image of something with a small panel in the centre. Don't click on the image or you'll get an advertisement.
- 3) Click the + icon in the top grey box to browse to each file in turn. You can send up to 2GB (plenty).
- 4) Enter editor@motoguzziclub.co.uk in the second box.
- 5) Enter your email address in the third box.
- 6) Add a message if you wish . . . then click 'Transfer'

Browse and add files

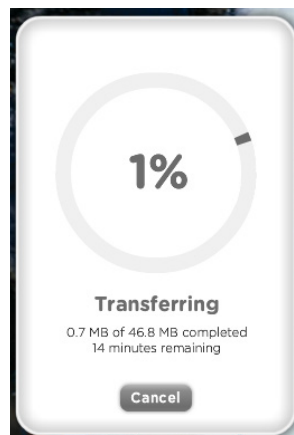
My email address

Your email address

Message if required

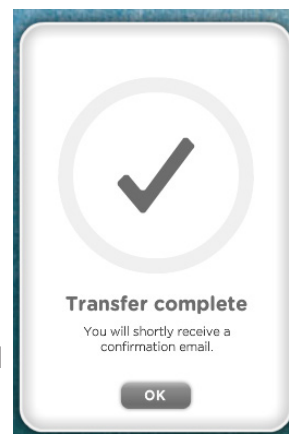


You'll now see a progress window:



And eventually, you'll see that the transfer is complete:

An email is automatically sent to the sender (you) and the recipient (in this case me). The recipient gets a link to download the files.



You can't send folders this way, only multiple files. If you'd like to send a folder full of files, email me and I'll send a note explaining how.

Thanks for reading this far.

Roger Shufflebottom, Editor, Gambalunga