

Club Shop

KEY RINGS

Simple leather key rings in red or black, printed with club logo £1.00

RUGBY SHIRT

Various colours. 100% cotton with white collar and placket, embroidered logo. Sizes S/M/XL/XXL (XXXL and XXXXL on request) £25.00

SWEATSHIRT

with embroidered logo. Red or Black, S/M/L/XL/XXL £18.00

HOODED SWEATSHIRT

Heavyweight cotton. Pocket at front, drawstring around hood. With logo. Sizes S/M/L/XL/XXL £27.00

LONG SLEEVE T-SHIRTS

Embroidered with club logo. Black or Grey, S/M/L/XL/XXL £13.00

GENT'S POLO SHIRT

100% cotton, embroidered logo. S/M/L/XL/XXL £16.00

HALF-ZIP FLEECE

Pockets at sides, and drawstring at bottom and with embroidered logo. Sizes: S/M/L/XL/XXL £25.00

WALLET

Nylon with velcro fastening and lots of pockets. £8.75

GAMBALUNGA BINDERS

Black with embossed gold lettering. £15.00



Rucksacks

Hi-Viz: £20.00 + P&P
Camo: £16.00 + P&P

Rugby tops: £22.50 + P&P



Binders

GB Sticker:

"Explore with the Eagle"
£1.00 plus £1.00. P&P



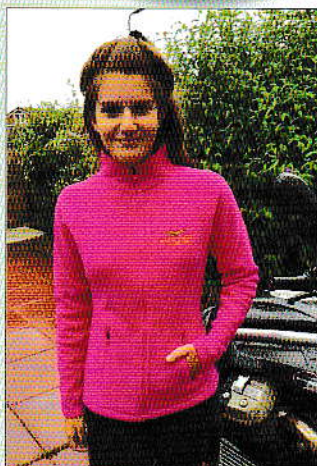
Patches and badges

All £3.00 plus £1.00 P&P



One-offs available ...
just ask!

Most colours available for most garments – please ask!



New! Ladies' micro fleece jacket
Sizes XS-XXL.
Black, fuchsia or navy. £25.00



WASH BAG

Black or red. Unfolds. Zipped pockets, mirror and hanging hook – ideal for camping!
£12.00 + P&P

CAPS

• £14.00 + £2.00 P&P



Men's Long-sleeve
Roll-neck Shirts
S-XXL, black: £16.00



New! Ladies' Polo
shirts, sizes 8-20
£21.00 + P&P

